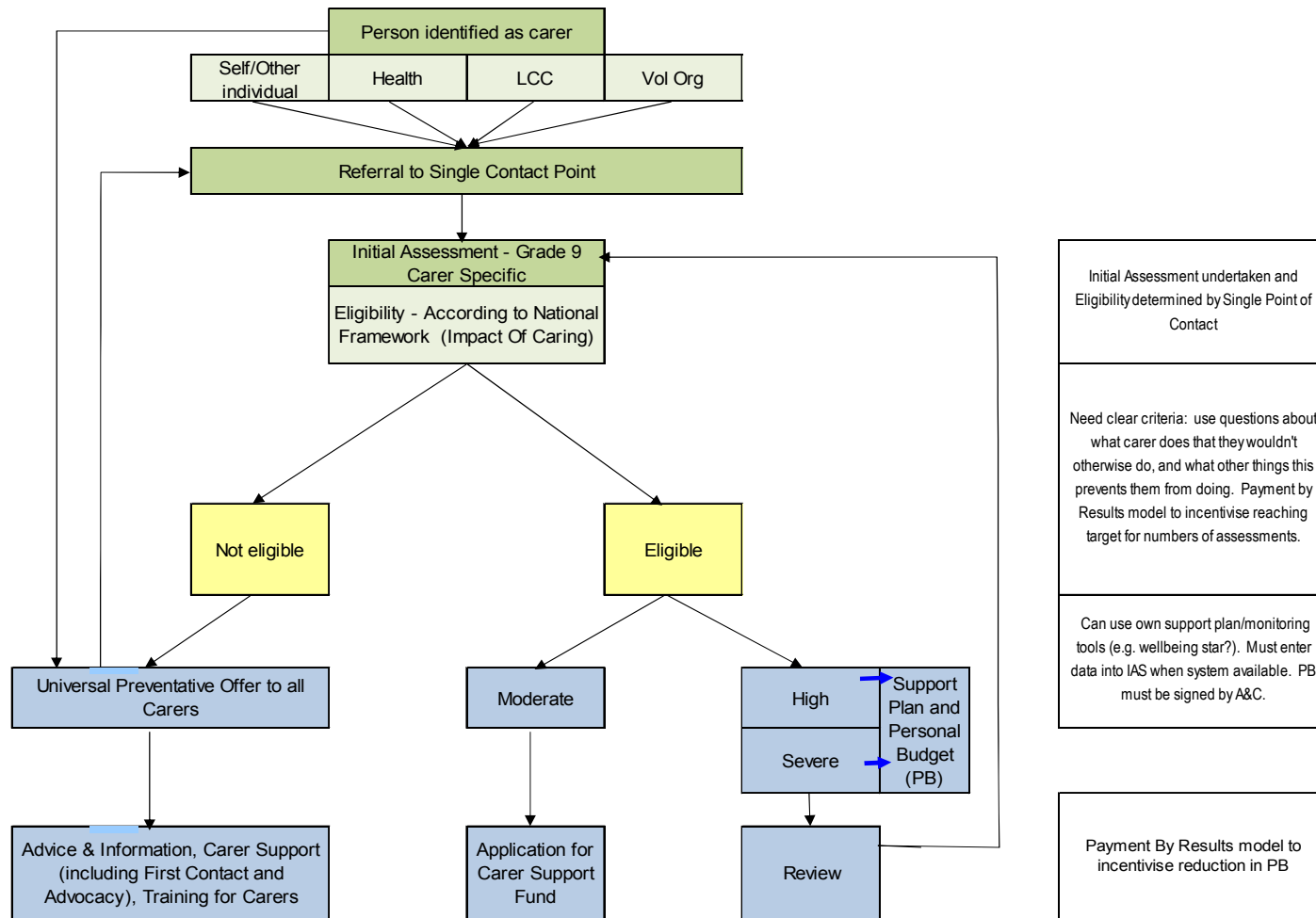


Proposed Carers Pathway - Appendix C



Initial Assessment undertaken and Eligibility determined by Single Point of Contact

Need clear criteria: use questions about what carer does that they wouldn't otherwise do, and what other things this prevents them from doing. Payment by Results model to incentivise reaching target for numbers of assessments.

Can use own support plan/monitoring tools (e.g. wellbeing star?). Must enter data into IAS when system available. PB must be signed by A&C.

Payment By Results model to incentivise reduction in PB

NB: Where eligibility is described in the above diagram it refers to eligibility for carers services as opposed to eligibility for Adult Social Care support through Fair Access to Care Services.

This page is intentionally left blank